

Spring Return Commercial Actuators - VAS-70 Series



Technical Specifications - VAS-70 Series Actuator					
Type	Actuator Models	VAS24-70-(A)	VAS24-70-T-(A)	VAMS24-70-(A)	VAS120-70-(A)
			Spring Return On/Off with optional Auxillary Switches (-A)	Spring Return On/Off & Floating with optional Auxillary Switches (-A)	Spring Return Modulating with optional Auxillary Switches (-A)
	Torque	70 lb-in. (8 Nm)			
Electrical	Operating Voltage	24 VAC (18 to 30 V) at 50/60 Hz 24 VDC (21.6 to 28.8 V)	24 VAC (19.2 to 28.8 V) at 50/60 Hz 24 VDC (21.6 to 28.8 V)		AC 120 V (102 to 132 V) at 60 Hz
	Power Consumption	VAC - 6.1 VA Running, 1.2 VA Holding VDC - 3.5 W Running, 0.5 W Holding	VAC - 7.9 VA Running, 5.5 VA Holding VDC - 3.5 W Running, 1.9 W Holding		0.05 A Running, 0.03 A Holding
	Input Signal	N/A	N/A	0(2) to 10 VDC 0(4) to 20 mA (with 500-ohm Resistor)	N/A
	Min. Transformer Size	7 VA per Actuator	8 VA per Actuator		N/A
	Input Signal Adjustments	N/A	AC 19.2 to 28.8 V at 50/60 Hz or DC 24 V +20%/-10%, Class 2 or SELV, Minimum Pulse Width: 500 ms	Factory Setting - DC 0 to 10 V, CW Rotation with Signal Increase Selectable DC 0 (2) to 10 V or 0 (4) to 20 mA with Field-Furnished 500 ohm 0.25 W Min. Resistor Switch Selectable - Direct or Reverse Action with Signal Increase	N/A
	Control Input Impedance	N/A	3000 Ohms	100k Ohms, Current Input: 500 Ohms with Field Furnished 500 Ohm Resistor	N/A
	Feedback Signal	N/A		DC 0 (2) to 10 V for Desired Rotation Range up to 95°. Corresponds to Rotation Limits, 0.5 mA at 10 V Maximum	N/A
	Auxillary Switch Rating	(-A) Models) Two Single-Pole, Double-Throw (SPDT), Double-Insulated Switches with Gold over Silver Contacts: AC 24 V, 50 VA Pilot Duty			(-A) Models) Two Single-Pole, Double-Throw (SPDT), Double-Insulated Switches with Gold over Silver Contacts: AC 120 V, 5.8 A Resistive, 1/4 hp, 275 VA Pilot Duty
	Equipment Rating	Class 2 or Safety Extra-Low Voltage (SELV)			N/A
	Electrical Connection	48 in. UL 758 Type AWM Halogen-Free Cable w/ 18 AWG (0.85 mm ²) Conductors & 0.25 in. (6 mm) Ferrule Ends			
Conduit Connections	Integral Connectors for 3/8 in. (10 mm) Flexible Metal Conduit				
Manual Override	Manual Override Crank				
Operation	Spring Return	Direction is Selectable with Mounting Position of Actuator: Actuator Side A is away from damper or valve: CCW Spring Return Actuator Side B is away from damper or valve: CW Spring Return			
	Rotation Range	Maximum Full Stroke: 95° - (Adjustable Stop: 35 to 95° Maximum Position (Modulating Only))			
	Electric Stall Detection	Protects from overload at all angles of rotation			

Spring Return Commercial Actuators - VAS-70 Series Continued

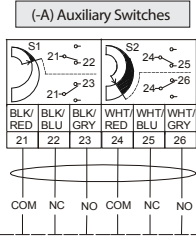


Technical Specifications - VAS-70 Series Actuator - Continued					
Type	Actuator Models	VAS24-70-(A)	VAS24-70-T-(A)	VAMS24-70-(A)	VAS120-70-(A)
			Spring Return On/Off with optional Auxillary Switches (-A)	Spring Return On/Off & Floating with optional Auxillary Switches (-A)	Spring Return Modulating with optional Auxillary Switches (-A)
Operation	Runtime for 90° of Rotation	Power On (Running) 55 to 71 Seconds for 0 to 70 lb-in (8 N-m) Load, at All Operating Conditions 60 Seconds Nominal at Full Rated Load (0.25 rpm) Power Off (Spring Returning) 13 to 26 Seconds for 0 to 70 lb-in (8 N-m) Load, at Room Temperature 21 Seconds Nominal at Full Rated Load, 39 Seconds Maximum with 70 lb-in (8 N-m) Load at -4°F (-20°C) 108 Seconds Maximum with 53 lb-in (6 N-m) Load at -40°F (-40°C)	Power On (Running) 150 Seconds Constant for 0 to 70 lb-in (8 N-m) Load, At All Operating Conditions Power Off (Spring Running) 17 to 25 Seconds for 0 to 70 lb-in (8 N-m) Load, at Room Temperature 22 Seconds Nominal at Full Rated Load, 94 Seconds Maximum with 70 lb-in (8 N-m) Load, at -40°F (-40°C)	Power On (Running) 55 to 71 Seconds for 0 to 70 lb-in (8 N-m) Load, at All Operating Conditions 60 Seconds Nominal at Full Rated Load (0.25 rpm) Power Off (Spring Returning) 13 to 26 Seconds for 0 to 70 lb-in (8 N-m) Load, at Room Temperature 21 Seconds Nominal at Full Rated Load, 39 Seconds Maximum with 70 lb-in (8 N-m) Load at -4°F (-20°C) 108 Seconds Maximum with 53 lb-in (6 N-m) Load at -40°F (-40°C)	
	Cycle Life	60,000 Full Stroke Cycles with 70 lb-in. (8 N-m) Load, 1,500,000 Repositions with 70 lb-in. (8 N-m) Load			
	Mechanical Connections	Round Shafts - 5/16 to 5/8 in. (8 to 16 mm) Square Shafts - 1/4 to 1/2 in. (6 to 12 mm)			
	Enclosure	NEMA 2 (IP54) for all mounting orientations			N/A
Environmental	Ambient Conditions (Non-Condensing)	Operating — -40° to 140°F (-40° to 60°C); 90% RH Maximum, Non-condensing Storage — -40° to 185°F (-40° to 85°C); 95% RH Maximum, Non-condensing			
	Audible Noise Rating	Running — < 47 dBA at 70 lb-in (8 N-m) Load, at a Distance of 39-13/32 in. (1 m) Holding — < 20 dBA at a Distance of 39-13/32 in. (1 m) Returning — <52 dBA at 70 lb-in. (8 N-m) Load - (All at a Distance of 39-13/32 in. (1 m))	Running — 35 dBA at 70 lb-in (8 N-m) Load, at a Distance of 39-13/32 in. (1 m) Holding — < 20 dBA at a Distance of 39-13/32 in. (1 m) Returning — <52 dBA at 70 lb-in. (8 N-m) Load - (All at a Distance of 39-13/32 in. (1 m))	Running — < 47 dBA at 70 lb-in (8 N-m) Load, at a Distance of 39-13/32 in. (1 m) Holding — < 20 dBA at a Distance of 39-13/32 in. (1 m) Returning — <52 dBA at 70 lb-in. (8 N-m) Load - (All at a Distance of 39-13/32 in. (1 m))	
	Dimensions	6.33" (L) x 3.90" (W) x 2.26" (H)			
	Weight	3.5 lb. (3.9 lb w/ Aux. Switches)			4.2 lb.
Conditions	Agency Certifications	UL Listed, CCN XAPX, File E27734; to UL 60730-1A: 2003-08, Ed. 3.1, Automatic Electrical Controls for Household and Similar Use; and UL 60730-2-14: Ed. 1, Part 2, Particular Requirements for Electric Actuators. UL Listed, CCN XAPX7, File E27734; to UL 60730-1:02-CAN/CSA: July 2002, 3rd Ed., Automatic Electrical Controls for Household and Similar Use; and CSA C22.2 No. 24-93 Temperature Indicating and Regulating Equipment CE Mark - This product is in compliance with the essential requirements and other relevant provisions of the EMC Directive 2004/108/EC and Low Voltage Directive 2006/95/EC. RCM Mark, Australia/NZ Emissions Compliant.			
	Warranty	5 Years limited from time of shipment.			

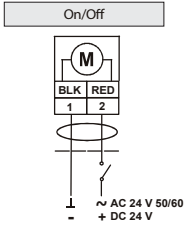
Spring Return Commercial Actuators - VAS-70 Series Wiring



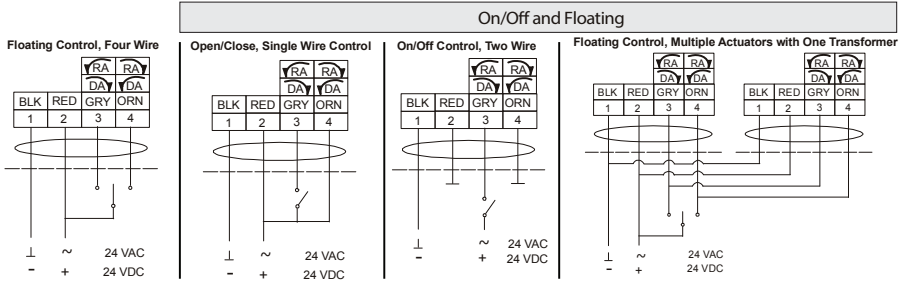
-(A) AUXILIARY SWITCH WIRING



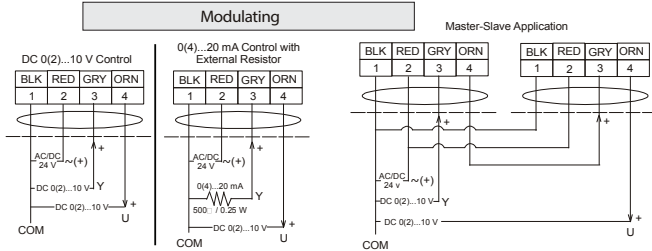
VAS24-70-(A) STANDARD CABLE



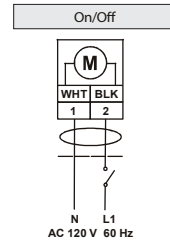
VAS24-70-T(A) STANDARD CABLE



VAMS24-70-(A) STANDARD CABLE



VAS120-70-(A) STANDARD CABLE



IMPORTANT: Do not install multiple VAMS series actuators connected to the same mechanical load. Master-slave application of DMS or VAMS series actuators requires that each actuator be connected to independent loads.

Warning - These actuators are designed for use only in conjunction with operating controls. Where an operating control failure would result in personal injury and/or loss of property, it is the responsibility of the installer to add safety devices or alarm systems that protect against, and/or warn of, control failure.

To avoid excessive wear or drive time on the motor, use a controller and/or software that provides a time-out function to remove the signal at the end of rotation (stall).

Disclaimer - The performance specifications are nominal and conform to acceptable industry standards. For application at conditions beyond these specifications, consult the nearest Bray office. Bray controls shall not be liable for damages resulting from misapplication or misuse of its products.